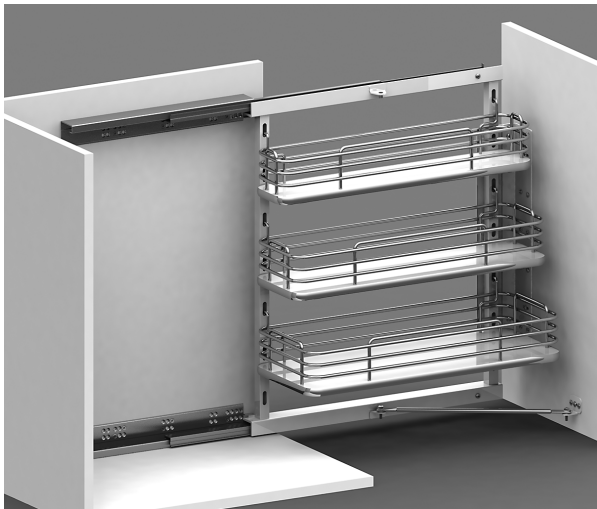


Step 01 Fix the runner with carcass using side template and fitting kit-1.



Step 04 Fix the door bracket with frame using fitting kit-2.



Step 07 Place the Baskets as per the need.



Step 08 Lock all baskets with the help of lock, Installation Complete.



Step 02 Fix the frame with runners.



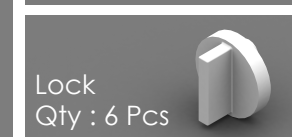
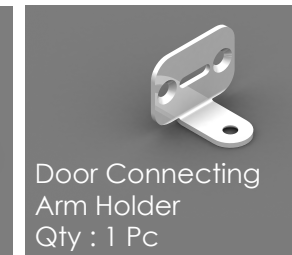
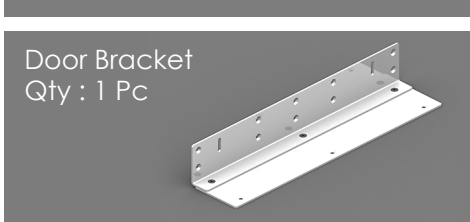
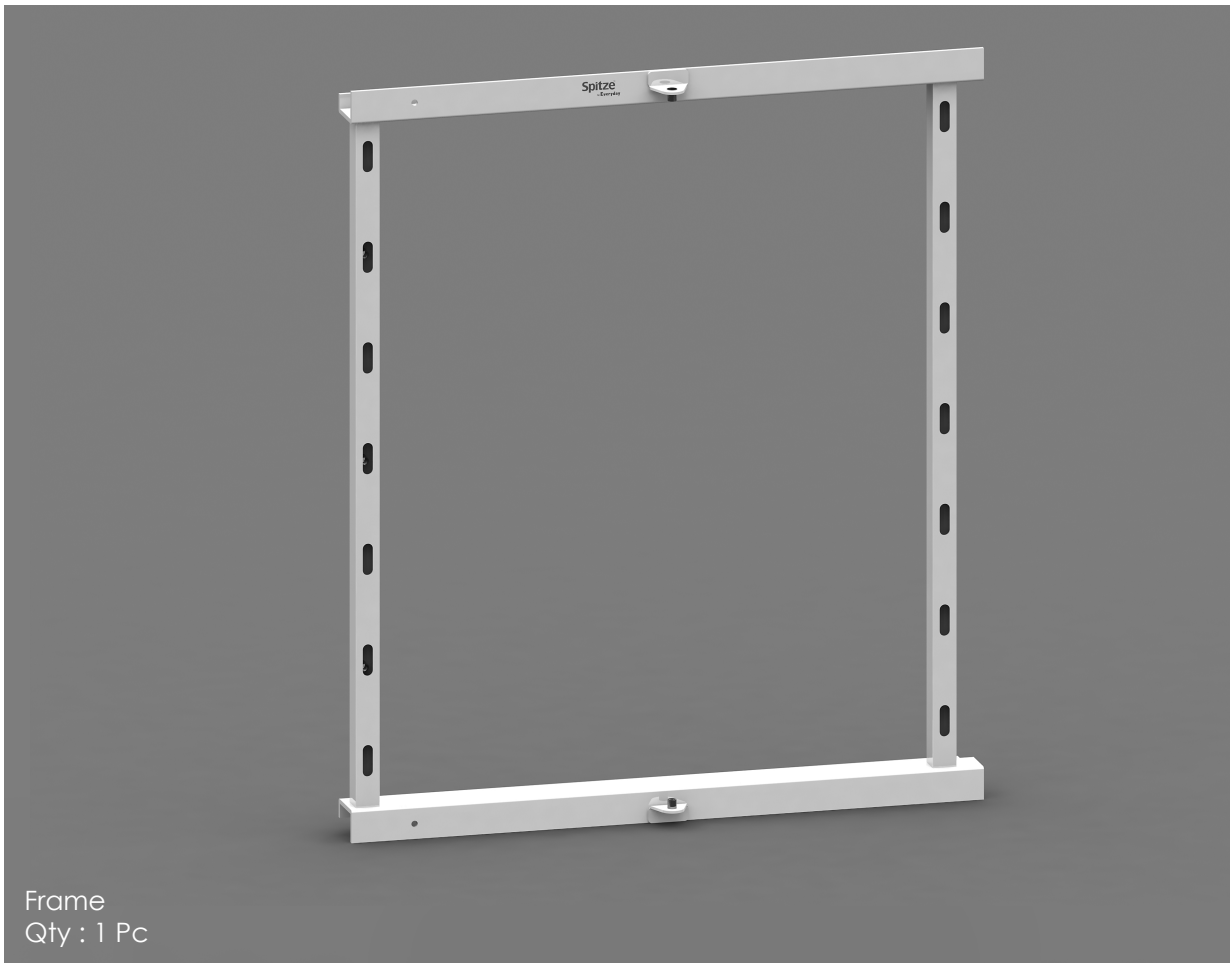
Step 05 Fix all the screw after adjustment using fitting kit-2.



Step 03 Fix the door bracket and door connecting arm holder with door with only 3 screw for further adjustment using door drawing and fitting kit-2.



Step 06 With the help of connecting arm connect frame and door connecting arm holder using fitting kit-3.



Double/Triple Basket Pullout Unit

Installation Guide

Packing List

SpitzeTM
by **Everyday**

Installation Guide (Right Fitting)

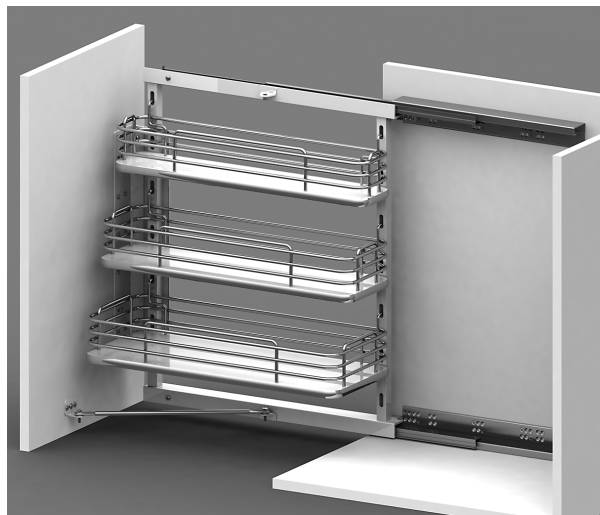
Packing List



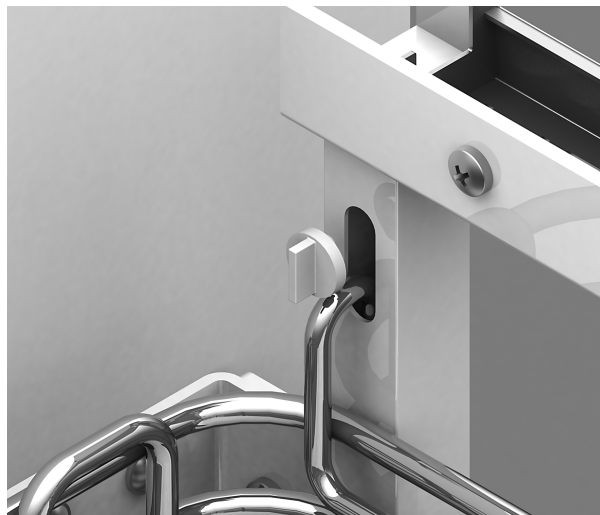
Step 01 Fix the runner with carcass using side template and fitting kit-1.



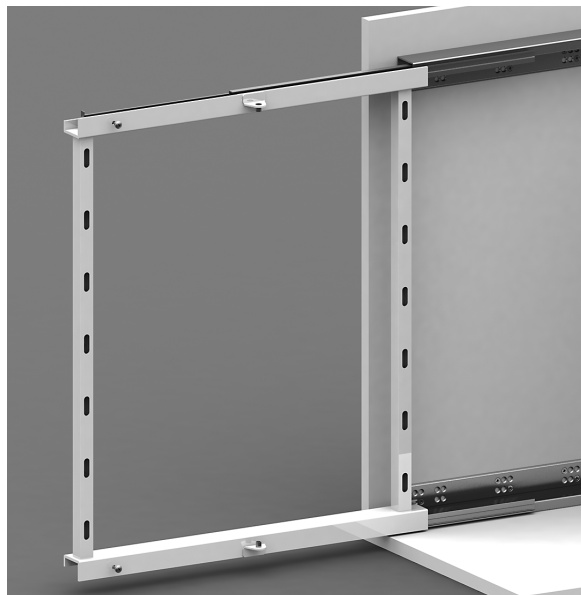
Step 04 Fix the door bracket with frame using fitting kit-2.



Step 07 Place the Baskets as per the need.



Step 08 Lock all baskets with the help of lock, Installation Complete.



Step 02 Fix the frame with runners.



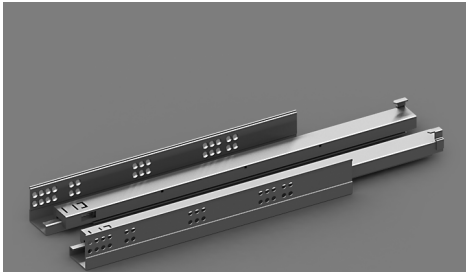
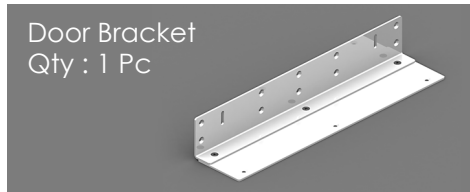
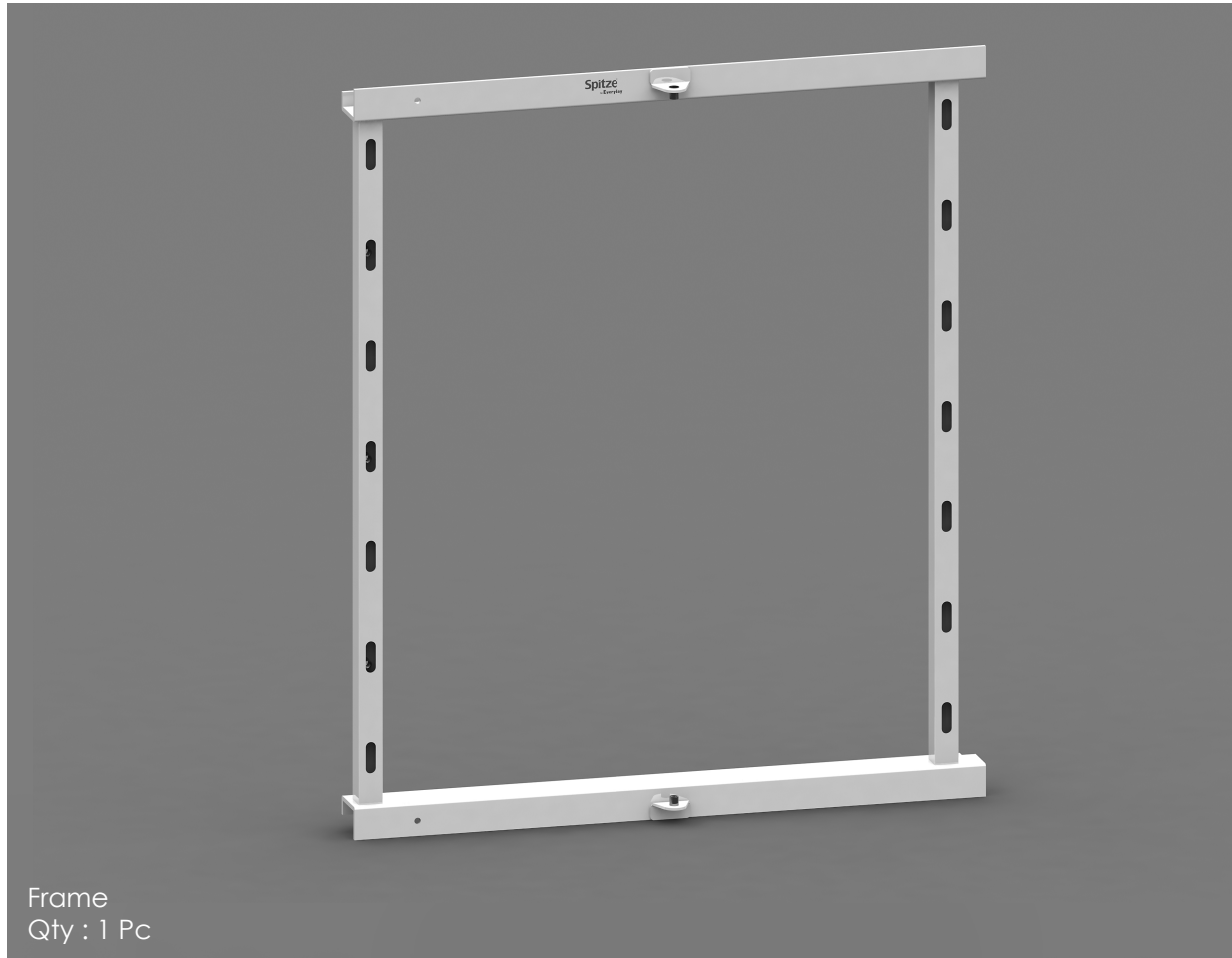
Step 05 Fix all the screw after adjustment using fitting kit-2.



Step 03 Fix the door bracket and door connecting arm holder with door with only 3 screw for further adjustment using door drawing and fitting kit-2.



Step 06 With the help of connecting arm connect frame and door connecting arm holder using fitting kit-3.



Double/Triple Basket Pullout Unit

Installation Guide

Packing List

SpitzeTM
by **Everyday**

Installation Guide (Left Fitting)

Packing List